

**03-10-2022**

**Heritage Preservation Committee  
Meeting  
Supplemental Packet**

**From:** Jill Livingston <jill.livingston@cityofsanrafael.org>  
**Sent:** Wednesday, March 9, 2022 11:34 AM  
**To:** Ron Moore <ron.moore@cityofsanrafael.org>  
**Cc:**  
**Subject:** 3390 St. Croix Trail S

Hello, Ron,

Please find attached our fencing and signage proposal for the committee meeting tomorrow evening. Looking forward to hearing the committee feedback.

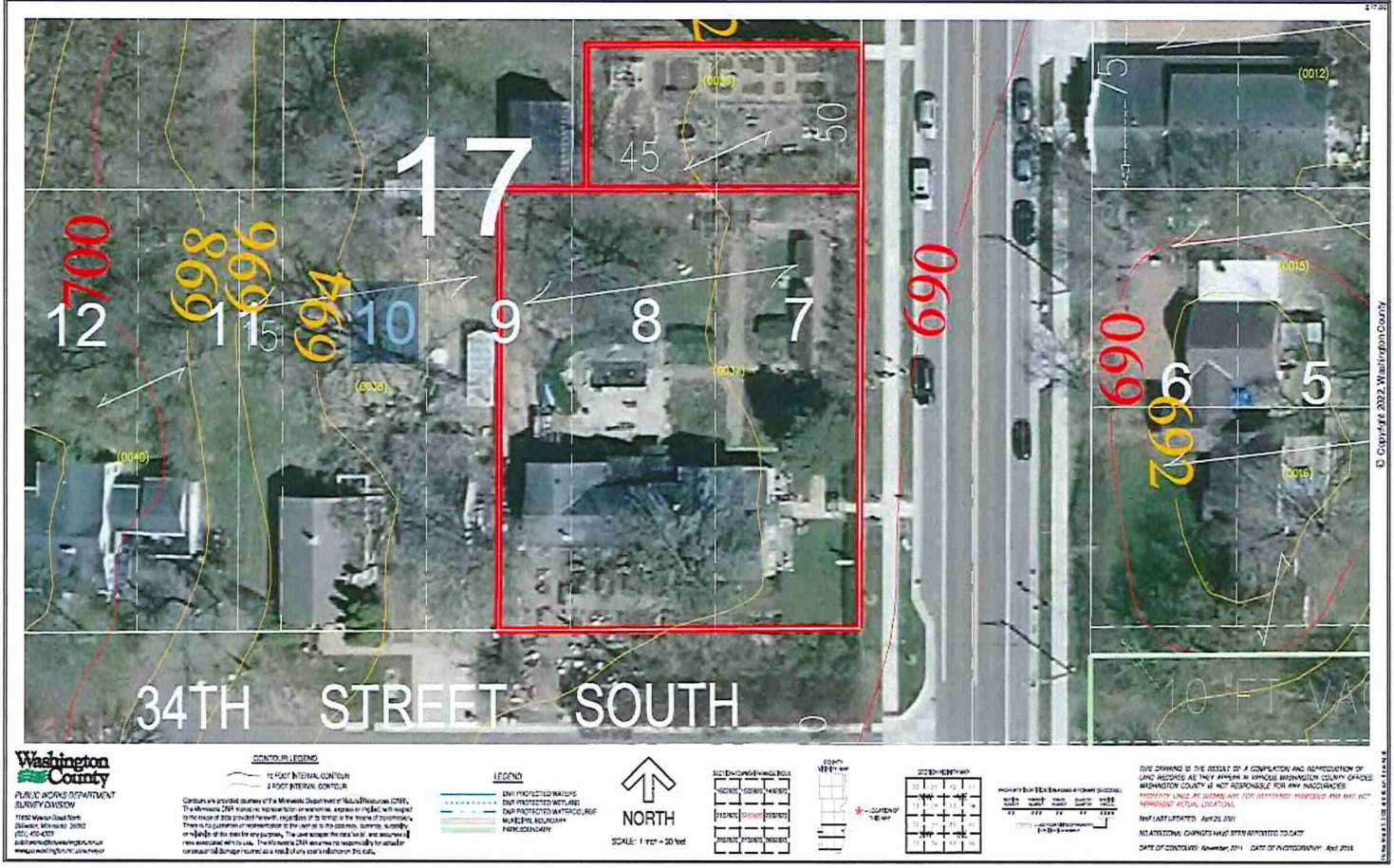
Warmly,

Jill

# PROPOSED IMPROVEMENTS FOR 3390 ST. CROIX TRAIL SOUTH, AFTON, MN

To sign, frame, and protect the gardens, plant yard, and business of  
Horta Culture at Squire House



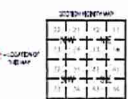


**Washington County**  
 PUBLIC WORKS DEPARTMENT  
 SURVEY DIVISION  
 1122 Wood Road North  
 Duluth, Minnesota 55812  
 (763) 554-4300  
 publicworks@washcountymn.gov  
 www.washcountymn.gov

**CONTOUR LEGEND**  
 12 FOOT INTERNAL CONTOUR  
 2 FOOT INTERNAL CONTOUR

Contours are provided courtesy of the Minnesota Department of Natural Resources (DNR). The Minnesota DNR makes no representation or warranty, express or implied, with respect to the accuracy or topographical correctness, regardless of its source, in the maps of Minnesota. There is no guarantee or representation in the use of its no warranty, liability, accuracy, or reliability of the data for any purpose. The user accepts the data for use and assumes all risk associated with its use. The Minnesota DNR assumes no responsibility for actual or consequential damage to users as a result of any use or reliance on this data.

**LEGEND**  
 BLUE PROTECTED WATERS  
 BLUE PROTECTED AREAS  
 DNR PROTECTED ANTICORROSION  
 WATERSHED BOUNDARY  
 PARKING SPACES



PROJECT'S BOUNDARY AND ADJACENT PROPERTIES

OWNER	ADDRESS	SECTION	BLK	LOT
WASH COUNTY	34TH STREET SOUTH	17	1	1
WASH COUNTY	34TH STREET SOUTH	17	1	2
WASH COUNTY	34TH STREET SOUTH	17	1	3
WASH COUNTY	34TH STREET SOUTH	17	1	4
WASH COUNTY	34TH STREET SOUTH	17	1	5
WASH COUNTY	34TH STREET SOUTH	17	1	6
WASH COUNTY	34TH STREET SOUTH	17	1	7
WASH COUNTY	34TH STREET SOUTH	17	1	8
WASH COUNTY	34TH STREET SOUTH	17	1	9
WASH COUNTY	34TH STREET SOUTH	17	1	10
WASH COUNTY	34TH STREET SOUTH	17	1	11
WASH COUNTY	34TH STREET SOUTH	17	1	12

THIS DRAWING IS THE RESULT OF A COMPLETION AND ADMINISTRATION OF LAND SURVEYS AS THEY APPEAR IN WASHINGTON COUNTY OFFICE RECORDS. WASHINGTON COUNTY IS NOT RESPONSIBLE FOR ANY INACCURACIES OR OMISSIONS UNLESS AS SHOWN AND FOR ANY PURPOSES AND MAY NOT BE USED FOR ANY OTHER PURPOSES.

NO ADJACENT OWNERS HAVE BEEN APPROXIMATED TO DATE.

DATE OF CONTINGENT: November, 2011 DATE OF PHOTOGRAPHY: April 2012

© Copyright 2012 Washington County

# EXISTING CONDITIONS

- A vernacular mix of now rotting and toppled gates and fence posts made from varied materials
- Scraggly hedging and unkempt border plants damaged or overgrown in need of removal
- A broken mix of 3' to 6' fences built of varied low-quality materials in various states of decay
- About a 100' of sturdy, attractive, low impact fencing to incorporate into the future fence plan

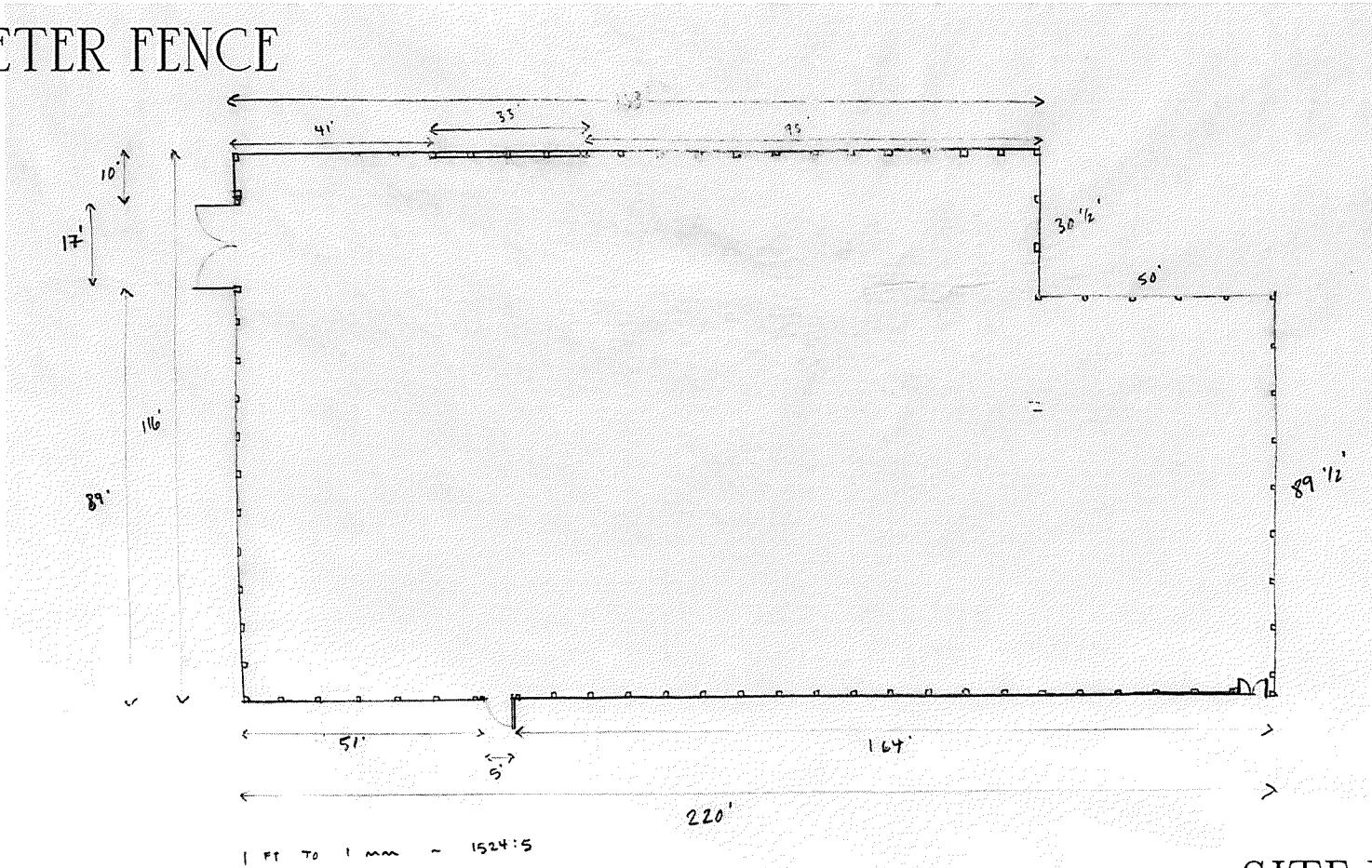




## WHAT IS AT RISK

- Unprecedented deer pressure from girdling, rubbing, and browsing is compromising the established specimen garden and could very well cost the plant yard's entire inventory which could easily exceed \$100,000
- When deer are hungry, they will eat anything. They ate all hostas before frost hit, have damaged or destroyed many structural elements including 18 mature plants permanently damaged beyond repair. Replacement alone quickly adds up to the thousands of dollars before calculating labor.
- Covid risks of the deers' continued presence in this social space that will host both children and the elderly

# PERIMETER FENCE



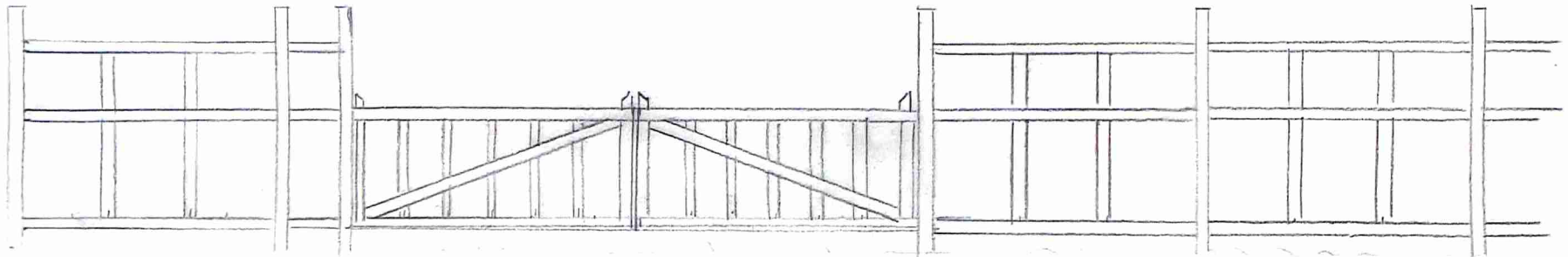
SITE PLAN

# PERIMETER FENCE



INSPIRATION





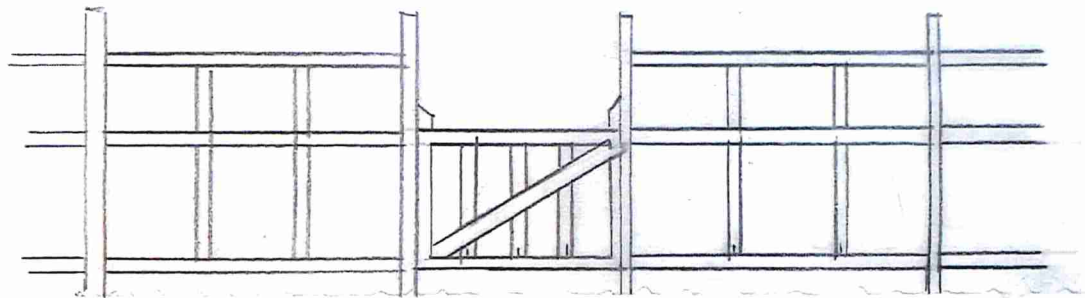
South facing driveway gate

**LOW IMPACT OPEN FENCE PANEL PLAN**

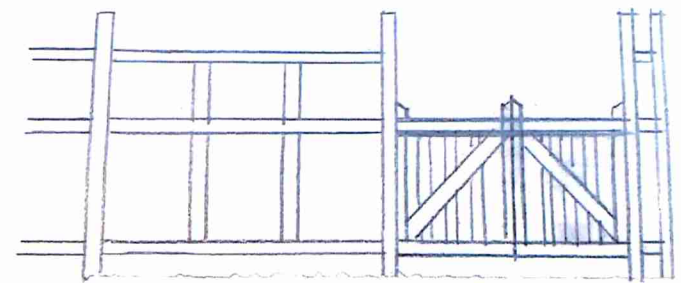
- 4 x 6 x 10 posts set 8' on center (3ft below ground 7 ft high)
- 2 x 4 x 8 bottom rail spanning betwixt posts ~ 6" above ground
- 2 x 4 x 8 middle rail spanning betwixt posts at 4' above ground
- 2 x 4 x 8 top rail spanning betwixt posts at 6' above ground

**CLASSIC ENGLISH GARDEN GATES**

- Diagonal cross braces
- Bottom rail ~ 6" above ground
- Top rail at 4' above ground



East facing gate south end



East facing gate north end

PERIMETER FENCE



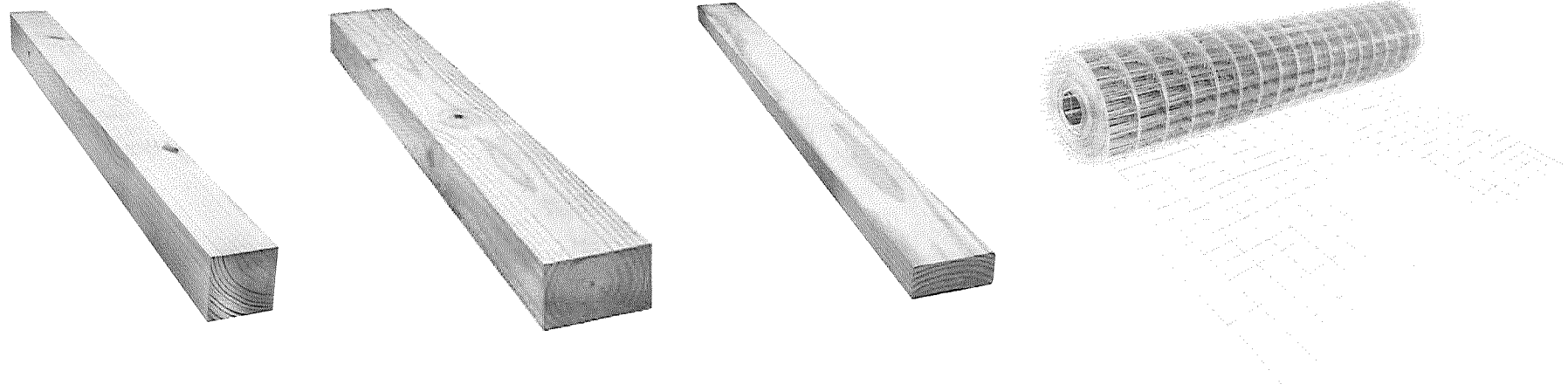
SAINT CROIX TRAIL SOUTH

PERIMETER FENCE

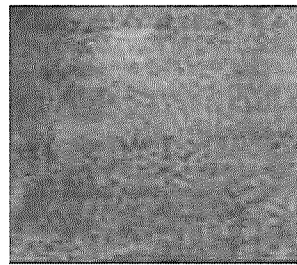


34<sup>TH</sup> STREET SOUTH

# PERIMETER FENCE

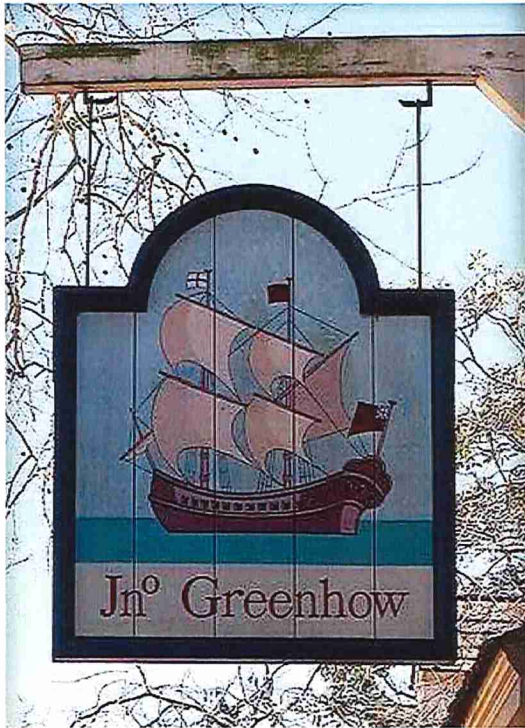


- 4 x 6 x 10 treated lumber posts (set 3 feet subsurface)
- 4 x 4 x 8 treated lumber for gates
- 6 x 6 x 10 treated lumber for gate posts
- 2 x 4 x 8 treated lumber for all trim rails and balusters
- 14-guage woven wire fencing
- All wood finished in solid pigment stain Classic Grey



# MATERIALS

## BOULEVARD SIGNS



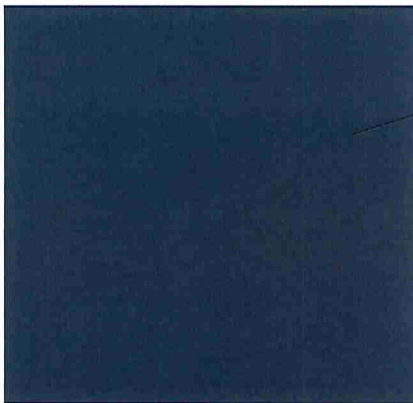
We looked to historical American signs from Colonial through mid-Nineteenth century. Simple graphics dominate which illustrate the focus of the business with the business name below.

## INSPIRATION

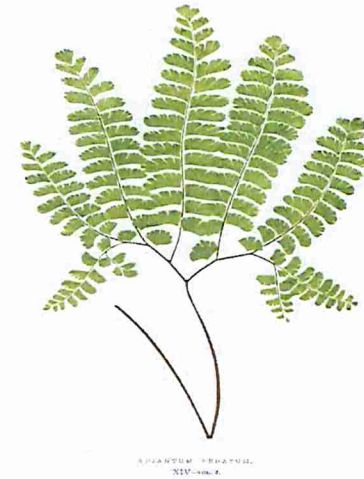
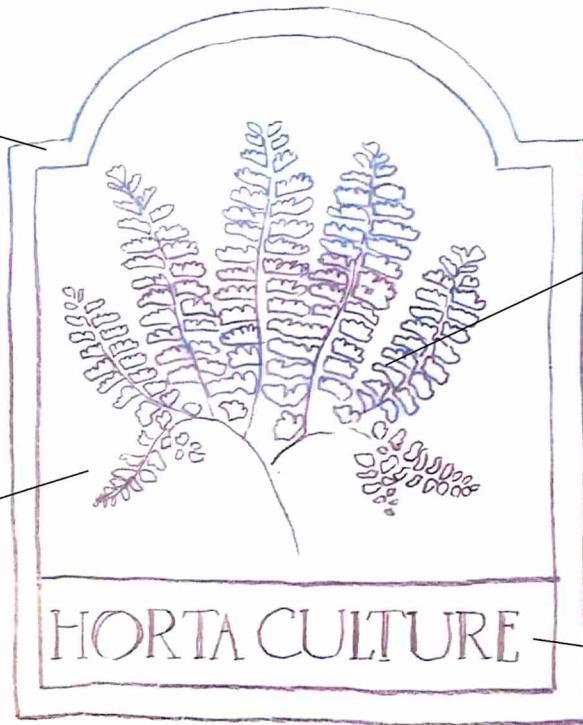
# BOULEVARD SIGNS



Frame and bracket finished with solid pigment stain in Classic Gray to match fence



Background field from Benjamin Moore's historical paint palette.



Botanical print of *Adiantum pedatum*.

HORTA CULTURE

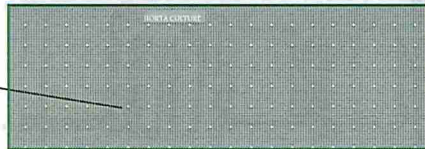
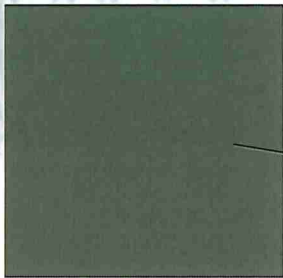
Simple serif font 'Savage' in charcoal gray on an off-white banner.

- One sign at the southern entrance along St. Croix Trail South
- A second sign at the gate along 34<sup>th</sup> Street South

DESIGN

# STOREFRONT SIGN

Mixed-use commercial corridors are commonplace in rural villages and metropolitan areas. Storefronts are historically delineated from the larger structure with paint and the name of the store simply painted on the lintel above the door. Modern shops in historic structures also typically display the store name and perhaps contact information on the entry window.



Benjamin Moore 441

## INSPIRATION & DESIGN



Thank you for your time!